

Arboretums • Lighthouses • Botanical Gardens • Planetariums • History Museums • Cultural Centers • University Galleries • Science Centers • Zoos • Aquariums • Arboretums • Lighthouses • Historic Houses • Natural History Museums • Cultural Centers • Historic Sites • Art Museums • Science Centers • Zoos • Aquariums • Lighthouses • Botanical Gardens • Planetariums • A

Join Us Today!



FLORIDA
ASSOCIATION
OF MUSEUMS

MEMBERSHIP

*Keeping our
standards high
and strengthening
the voice of all
Florida museums.*



Arboretums • Lighthouses • Botanical Gardens • Planetariums • History Museums • Cultural Centers • University Galleries • Science Centers • Zoos • Aquariums • Arboretums • Lighthouses • Historic Houses • Natural History Museums • Cultural Centers • Historic Sites • Art Museums • Science Centers • Zoos • Aquariums • Lighthouses • Botanical Gardens • Planetariums • Children's Museums • Histor

Membership in the Florida Association of Museums is one of the most valuable things you can do to advance the museum business and fortify the voice for museums in Florida.

"Although each of the Florida museums is different from one another, there is an overarching commonality that binds us. FAM solidifies our collective mission of education and public service to the residents and visitors of Florida."

*- Melissa Kendrick, 2012-13
President of FAM Board of Directors
Executive Director, Mel Fisher Maritime Museum, Key West*

Institutional Membership

For all non-profit museums who want to strengthen their voice to improve their institutions visibility and visitation.

Individual Membership

For museum staff, aspiring museum professionals, trustees, docents, and volunteers to stay informed and connected.

Affiliate Membership

For museum vendors, Direct Support Organizations, consultants, and benefactors to provide visibility and access to FAM members.

"The Florida Association of Museums is the vital link to my peers in the museum community in Florida. I see great value in being part of a strong and active network of professionals."

- Kathy Fleming, Executive Director, St. Augustine Lighthouse & Museum, St. Augustine

Reasons to Join FAM Now:

- Advocacy
- Professional Development
- Networking
- Leadership
- Annual Conference
- Promotional Activities

Reap the Benefits: In return for your membership in the Florida Association of Museums you will receive all of the advantages a strong professional organization can offer.

Members-Only Benefits and Opportunities

- Annual subscription to the quarterly FAMNews (newsletter)
- LEGISLATIVE updates
- Notices for all Educational Programs
- DISCOUNTS on registration for the FAM Annual Conference and Workshops
- Expanded listing in the FAM Florida Museum Directory and on the FAM Website
- ACCESS to the Peer Coaching and Mentorship Programs
- ACCESS to an expansive network of museum professionals - statewide/nationally
- Representation on VISIT FLORIDA Board of Directors
- Participation in AAM Advocacy Days in Washington DC and Tourism Day in Tallahassee
- Job listings on the FAM website
- Participate on FAM committees with colleagues across the state
- Meet national museum advocates
- VOTING privileges to elect members of the FAM Board of Directors
- Participate in the Connecting to Collections initiative

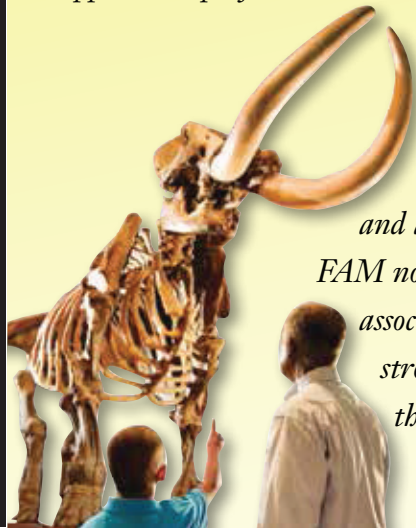


Advancing the Florida museum profession through education, advocacy and networking.

Florida is one of the largest and fastest growing states in the nation. Florida museums increase in numbers and size every day. Florida has more than 340 museums and thousands of museum professionals and volunteers. Museums are part of the economic and education solution for Florida.



The Florida Association of Museums invites museums, affiliated organizations, and interested individuals to be involved in a collective partnership that will lead the Florida museum profession to new heights. As museums change and require new sources of support and professional development, FAM



will be there to provide guidance, leadership, and assistance. Join FAM now and keep your association one of the strongest in the country.



FAM Membership Application

Name: _____
Title: _____
Organization: _____
Address: _____
City/State/Zip: _____
Phone: _____
Fax: _____
Email: _____

☐ **Institutional Membership**

(Museums only: dues equal 0.1% x operating budget)
Budget < \$250,000 = minimum \$100
Budget > \$250,000 = minimum \$250; maximum \$2,000

☐ **Individual Membership**

(Student-\$20; Retired-\$25; Basic-\$30;
Sustaining-\$60; Supporting-\$120)
Select Membership Section of choice:
___Art___Children's___History___Science
(includes Zoos, Botanical Gardens, Aquariums, etc.)

☐ **Affiliate Membership**

(Direct Support Organizations, Vendors, Benefactors)
(Dues: Basic-\$75; Supporting-\$150;
Sustaining-\$300; Patron-\$500)

**Please complete, make checks payable to
FAM and submit by mail, fax or email to:**

FAM
PO Box 10951
Tallahassee, FL 32302
Fax: 850.222.6112
Email: fam@flamuseums.org

Amount Enclosed _____ or charge my card:

Credit Card Information

Charge my: ☐ Amex ☐ Visa/MC

Credit Card Number: _____

Expiration Date: _____

V Code _____ (3 digit code on signature line)

Billing Address (if different than above):

Authorized Signature: _____

Join Online at www.flamuseums.org

r Museums • Science Centers • Zoos • Aquariums • Arboretum
Children's Museums • Historic Houses • Natural History Mu
thnographic Museums • Historic Sites • Art Museums • Science Ce
Botanical Gardens • Planetariums • Children's Museums • His
enters • University Galleries • Ethnographic Museums • Histor
museums • Science Centers • Zoos • Aquariums • Museums • Li

The Voice of Florida's Collections and Exhibit Community...



FAM WORKS FOR ALL FLORIDA MUSEUMS THROUGH:

- *Governmental relations to increase funding*
- *Professional development to enhance productivity and leadership*
- *Museum networks to expand awareness and increase peer-to-peer communication*
- *Numerous resources to safeguard established institutions and nurture new ones*



www.flamuseums.org

PO Box 10951
Tallahassee, FL 32302
850.222.6028
fam@flamuseums.org



...e Centers • Zoos • Aquariums • Arboretum
...s • Historic Houses • Natural History M
...s • Historic Sites • Art Museums • Sci
...ical Gardens • Planetariums • Children's Mus
...s • University Galleries • Ethnographic Museum
...s • Aquariums • Arboretums • Lighthouses • Botanical Gard

MEMBERSHIP

Art Museums • Science Centers • Zoos • Aquariums • Arboretums • Lighthouses • Botanical Gardens • Planetariums • Historic Sites • Museums • Historic Homes • Natural History Museums • Cultural Centers • University Galleries • Geographic • Museums • Historic Sites • Science Centers



**Advancing
the Florida
museum professional
through education,
advocacy and networking...**



• **Trustee Day**



- **Tourism Day
in Tallahassee**
- **Connecting
to Collections**



• **Awards
Program**



- **Professional
Development
Workshops**
- **AAM Museum
Advocacy Day
in DC**
- **Annual
Conference**



- **Legislative Receptions
in Home Districts**
- **Mentoring and Networking**

Join Us Today!



PO Box 10951
Tallahassee, FL 32302
850.222.6028
fam@flamuseums.org

www.flamuseums.org